

# Two taxa of the genus *Sticta* (*Peltigerales*, *Ascomycota*), *S. andina* and *S. scabrosa* subsp. *scabrosa*, new to Bolivia confirmed by molecular data

Emilia Anna Ossowska\*, Magdalena Kosecka, Julia Jaskólska & Martin Kukwa

## Article info

Received: 20 Jul. 2022  
Revision received: 4 Oct. 2022  
Accepted: 4 Oct. 2022  
Published: 9 Dec. 2022

## Associate Editor

Adam Flakus

**Abstract.** The first records of *Sticta andina* and *S. scabrosa* subsp. *scabrosa* from Bolivia are presented. All records are confirmed by molecular data. *Sticta andina* has flattened, marginal isidia and phyllidia with abundant, submarginal apothecia, while tomentum is dark brown to black, whereas, *S. scabrosa* subsp. *scabrosa* has marginal and laminal phyllidia and pale to dark, grey tomentum. Two Bolivian specimens of the latter possess sparse, marginal to laminal apothecia, which previously have not been observed in this species. The haplotype network indicates that the *S. andina* specimens from Bolivia have three haplotypes, two of which are different from those previously reported. In the case of *S. scabrosa* subsp. *scabrosa*, two haplotypes were found, of which one is newly reported. A distribution map of *Sticta* species confirmed for Bolivia is presented.

**Key words:** lichens, lichenized fungi, *Peltigeraceae*, *Lobarioideae*, nucITS rDNA, distribution, haplotype network

## Introduction

The subfamily *Lobarioideae* within the family *Peltigeraceae* consists of macrolichens with foliose to fruticose thalli (Cannon & Kirk 2007; Kirk et al. 2008; Moncada et al. 2013a; Lücking et al. 2021a). It comprises about 800 taxa, of which almost 400 belong to the genus *Sticta* (Galloway 1994, 2007; Kirk et al. 2008; Moncada & Lücking 2012; Moncada et al. 2013a, b, 2020, 2021a, b; Mercado-Díaz et al. 2020; Lücking et al. 2021a).

So far several *Sticta* species were listed from Bolivia by Rodríguez-Flakus et al. (2016), but the occurrences of only two taxa, *S. isidiokunthii* (Moncada & Lücking 2012) and *S. weigelii* (Acharius 1810), were confirmed by the results of phylogenetic analyses (Moncada & Lücking 2012; Ossowska 2021). Most of the records listed by Rodríguez-Flakus et al. (2016) require re-examination as they are historical and were made before many taxa were recognized (e.g., Nylander 1859, 1861; Rusby 1896; Herzog 1922, 1923). In addition, the correct identification of *Sticta* taxa requires a molecular approach due to the high level of homoplasy between different species (Moncada et al. 2021a, b). This treatment is particularly important in the case of morphodemes, i.e., species that are morphologically similar, but phylogenetically distant (Lücking et al.

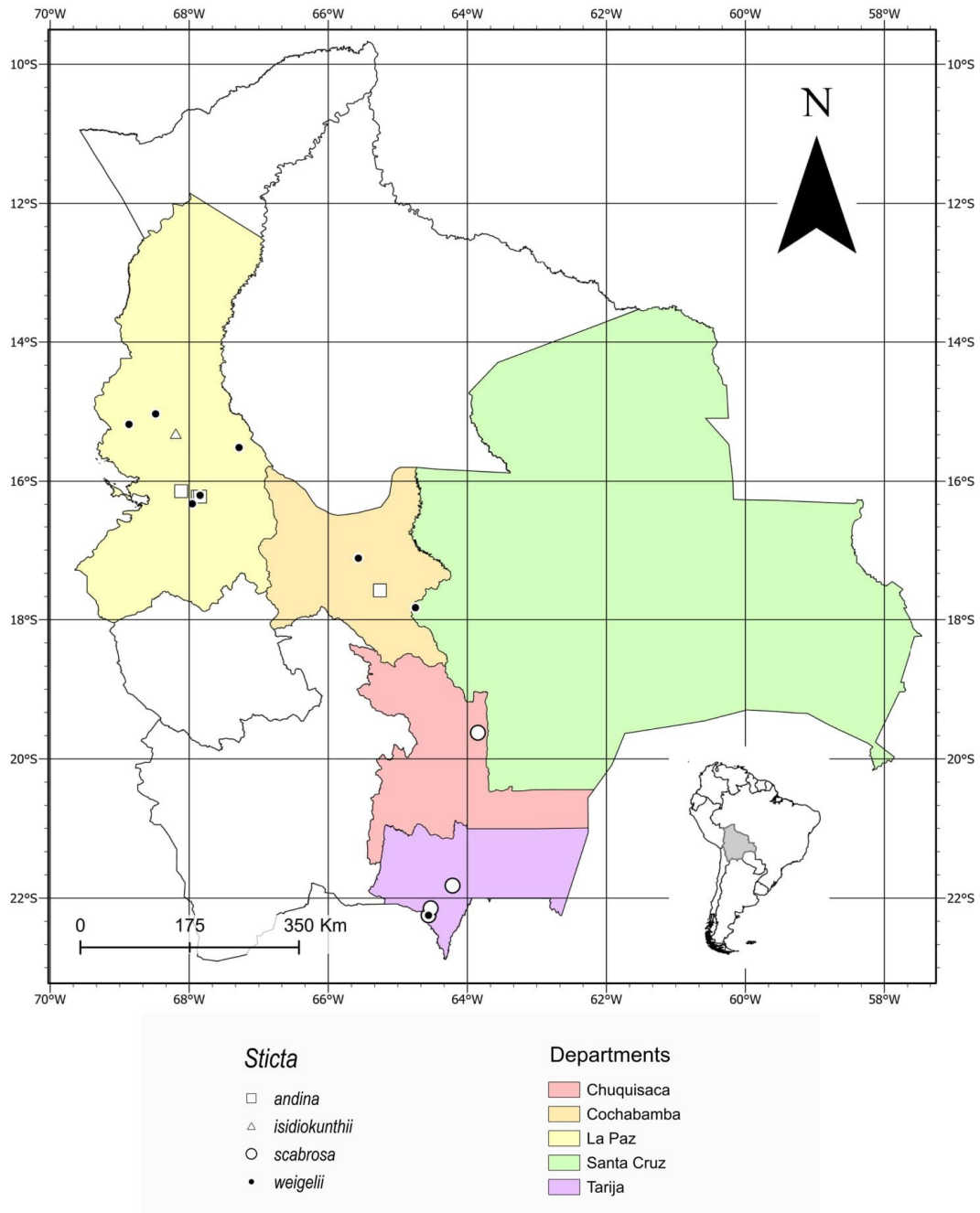
2021b). In recent years, several *S. weigelii* morphodemes have been described, among them, *S. andina* (Moncada et al. 2021a, b) and *S. scabrosa* (Moncada et al. 2020, 2021a, b). According to literature data (Moncada 2012; Mercado-Díaz et al. 2020; Moncada et al. 2021a, b), both species are common representatives of the genus *Sticta*, their occurrences having been confirmed from several countries in South and North America. Conversely, they have not been reported so far from Bolivia. The records we present here contribute to the increasing knowledge of the diversity of *Sticta* in Bolivia. Indeed, it is presumed that diversity may be as high in Bolivia as it was shown for neighboring Colombia (Moncada 2012; Moncada & Lücking 2012; Moncada et al. 2013b, 2014) and many species may occur there including taxa new to science (Ossowska et al. 2022). A map of known localities of recently reported *Sticta* species from Bolivia is presented in Fig. 1.

*Sticta andina* and *S. scabrosa* have been characterised in detail in previous papers (Moncada 2012; Moncada et al. 2020, 2021a, b; Mercado-Díaz et al. 2020), but their full variability is still not well understood. Specifically, so far apothecia have not been observed in *S. scabrosa* specimens across its distribution range (Mercado-Díaz et al. 2020; Moncada et al. 2021a), whereas we found them in our specimens from Bolivia.

In this paper we report the first localities of *Sticta andina* and *S. scabrosa* from Bolivia. The identity of both is supported by the results of phylogenetic analyses.

Department of Plant Taxonomy and Nature Conservation, Faculty of Biology, University of Gdańsk, Wita Stwosza 59, 80-308 Gdańsk, Poland

\* Corresponding author e-mail: [emilia.ossowska@ug.edu.pl](mailto:emilia.ossowska@ug.edu.pl)



**Figure 1.** Distribution map of *Sticta* species recently confirmed from Bolivia.

In addition, their morphological and anatomical characteristics are presented, together with the description of apothecia in *S. scabrosa* subsp. *scabrosa*, previously not observed in this species, distribution map of all *Sticta* reported from Bolivia and haplotype network results.

## Material and methods

### Material

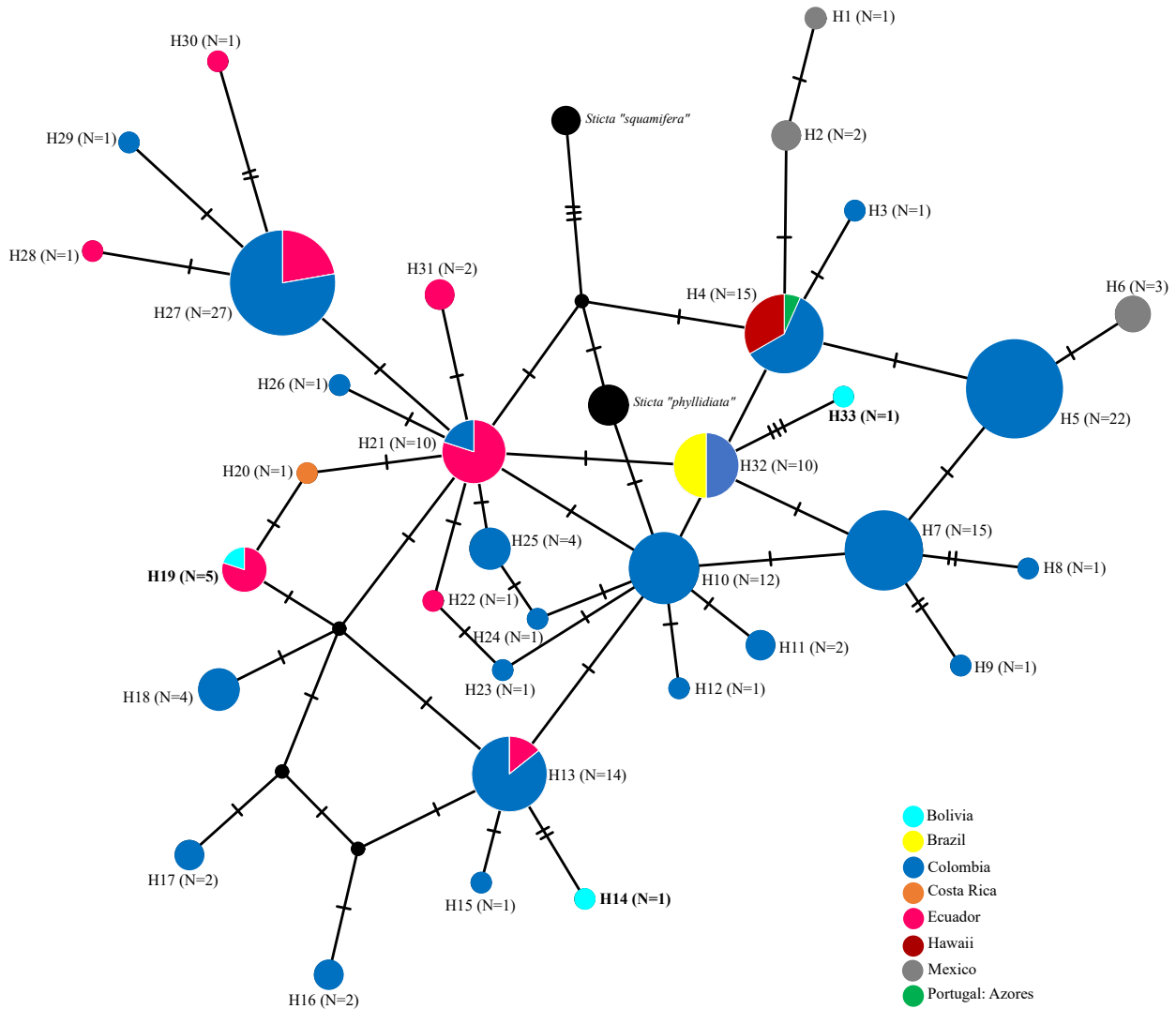
The studied material is deposited in LPB, KRAM and UGDA herbaria. Morphology and anatomy were examined using a Nikon SMZ 800N stereomicroscope. In addition, the color reaction with K (water solution of potassium hydroxide) was checked (Orange et al. 2001). The distribution map was prepared using ArcGIS Pro 2.8.0. software (ESRI, Redlands, California, USA).

DNA extraction, PCR amplification and DNA sequencing

DNA extractions were undertaken using the Sherlock AX Kit (A&A Biotechnology, Poland) and the Plant & Fungi DNA Purification Kit (Eux, Poland) following the manufacturer's protocol. Fungal nucITS rDNA, which is used as a universal barcode marker for fungi (Schoch et al. 2012), was amplified using the primers ITS1F (Gardes & Bruns 1993) and ITS4A (White et al. 1990). In PCR amplification, Start-Warm HS-PCR Mix (A&A Biotechnology, Poland) was used with the following parameters: an initial denaturation 94°C for 3 min and 33 cycles of 94°C for 30 sec; annealing at 52°C for 45 sec; extension at 72°C for 1 min and final extension at 72°C for 10 min. The PCR products were purified with



**Figure 2.** Majority-rule consensus tree from Bayesian analysis of *Sticta* based on nucITS rDNA data set with posterior probabilities and bootstrap support values from *IQ-TREE* analysis presented near the branches. For each record, GenBank accession no. or voucher no. (for newly sequenced samples) are followed with species name. Newly sequenced records from Bolivia are marked in bold.



**Figure 3.** Haplotype network based on nucITS rDNA sequences of *Stictia andina* including *S. "squamifera"* and *S. "phyllidiata"*.

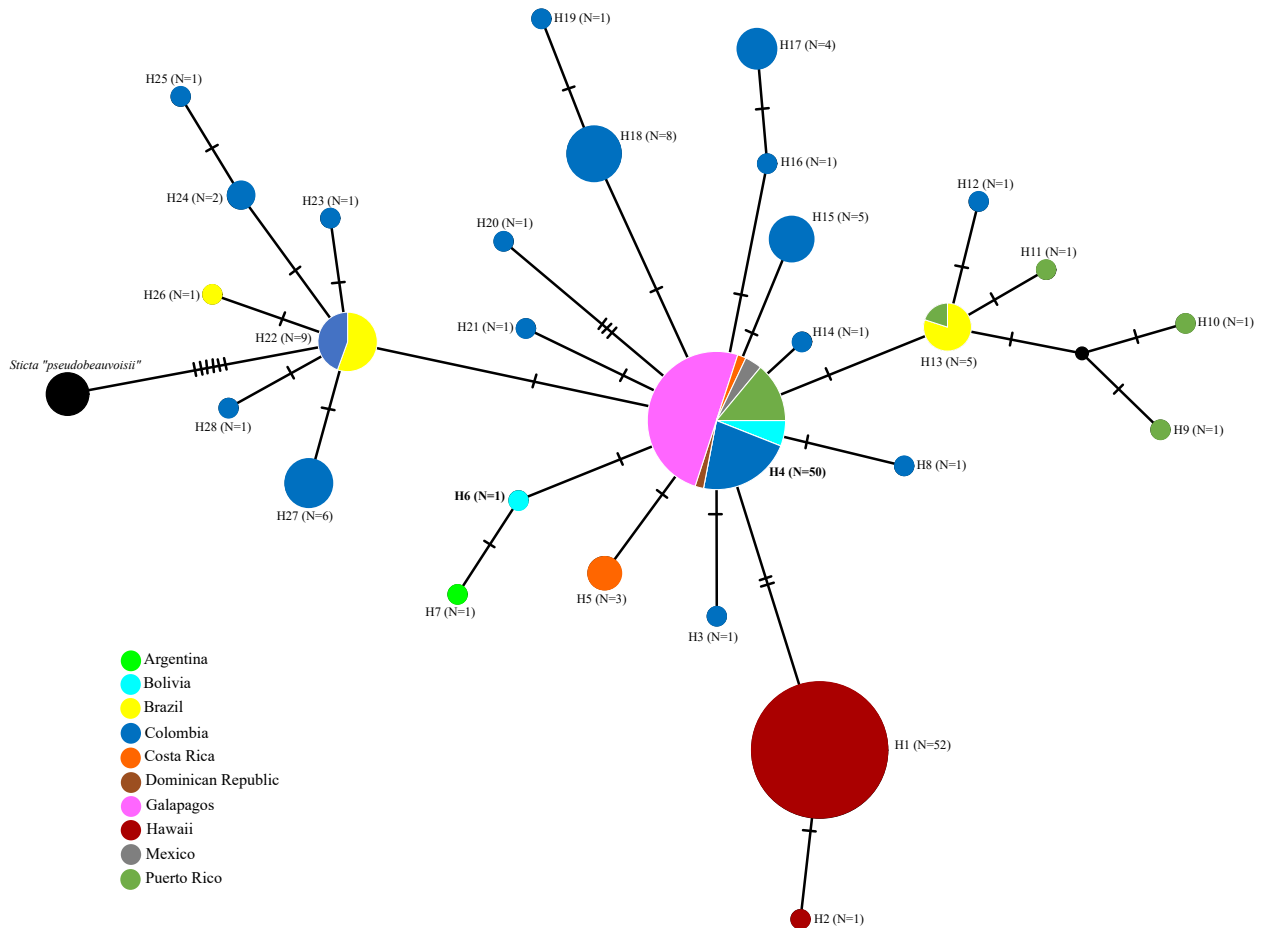
Clean-Up Kit (A&A Biotechnology, Poland) according to the instructions. Sequencing was performed in Macrogen (<http://www.macrogen.com>).

### Sequence alignment and phylogenetic analyses

The newly generated nucITS rDNA sequences were compared with all *Stictia* sequences available in GenBank database using BLAST search (Altschul et al. 1997). The phylogenetic analyses were performed based on the alignment reduced to selected *Stictia* related to the species treated in this paper. The final alignment consisted of 89 *Stictia* sequences and 561 characters. A sequence of *Lobaria pulmonaria* was used as an outgroup. Sequence alignments of the nucITS rDNA were performed using MAFFT v.7.475 (Kato et al. 2002) as implemented in UGENE v.44.0 (Okonechnikov et al. 2012). Phylogenetic relationships were inferred with Bayesian Inference (BI) carried out in MrBayes v.3.2.2 (Huelsenbeck & Ronquist 2001). Two parallel MCMC runs were performed, using four independent heated chains and 5 million generations, sampling every 1000th tree. The initial 1250 trees of each

run (25%) were discarded as burn-in, and posterior probabilities were estimated by constructing a majority-rule consensus tree of all sampled post-burn-in trees. Maximum likelihood (ML) analyses were performed using the edge-linked partition model in IQ-TREE (Nguyen et al. 2015; Chernomor et al. 2016) with 10,000 bootstrap replications on the CIPRES Science Gateway (Miller et al. 2010). The best-fit substitution model was selected based on AIC (Akaike Information Criterion) as implemented in MrModeltest 2.0 (Nylander 2004); GTR+I+G was selected for both datasets. The tree topology obtained using the ML method did not contradict the Bayesian tree; therefore, only the Bayesian tree is shown (Fig. 2). The consensus trees were visualized using FigTree v.1.4.275 (Rambaut 2006–2014). Branches with bootstrap support  $\geq 90\%$  and posterior probabilities  $\geq 0.99$  were considered to be supported. New sequences of *S. andina* and *S. scabrosa* subsp. *scabrosa* have been deposited in GenBank (Supplementary Material Table S1).

To incorporate new records of *Stictia andina* and *S. scabrosa* subsp. *scabrosa* within available biogeographical data, we performed nucITS rDNA haplotype networks on the separate species alignments of these two species,



**Figure 4.** Haplotype network based on nucITS rDNA sequences of *Sticta scabrosa* including *S. "pseudobeauvoisii"*.

following Moncada et al. (2020) (Supplementary Material Table S2). We excluded several previously obtained sequences of *Sticta scabrosa* subsp. *scabrosa* and one new sequence (specimen 15051) due to too short nucITS rDNA fragments. For both datasets, TCS networks (Clement et al. 2002) were executed with 95% connection limit and gaps treated as missing as implemented in PopART (Leigh & Bryant 2015).

## Results and discussion

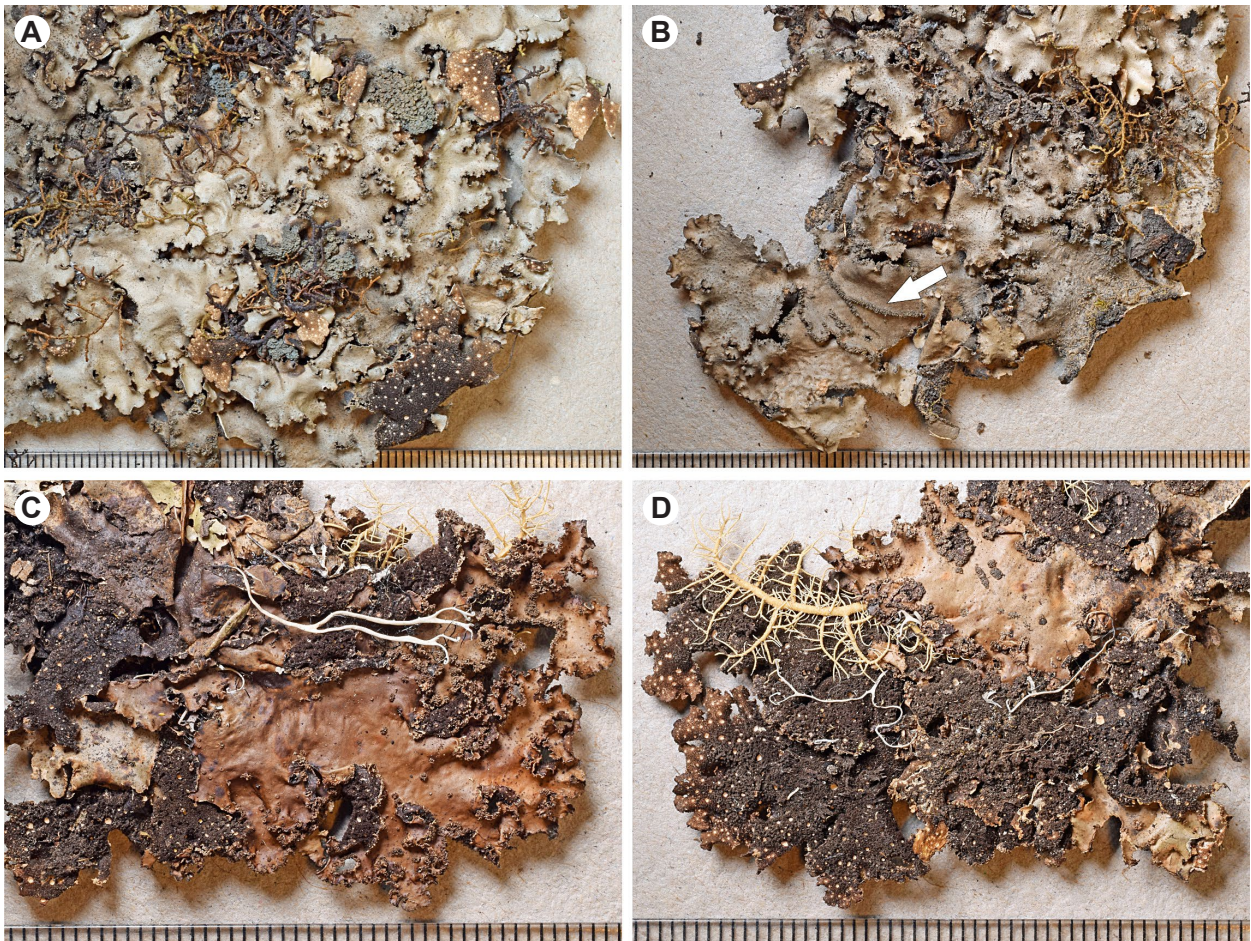
Eight new nucITS rDNA sequences were generated for this study (Supplementary Material Table S1). Based on the nucITS rDNA dataset, specimens 17210, 15051, 9257 and 22002 belonged to *Sticta andina* and were placed in well-supported subclades with sequences from GenBank forming a larger clade together with the sequence of the not yet formally described *S. "squamifera"* (Moncada et al. 2014; Moncada et al. 2020) (Fig. 2, Supplementary Material Table S1). Specimens 19712, 11229, 16336 and 18470 represented *Sticta scabrosa* subsp. *scabrosa* and in our tree form a well-supported clade with other sequences downloaded from GenBank and these obtained from *S. scabrosa* subsp. *hawaiiensis* (Moncada et al. 2021a, b). Based on TCS networks, we observed three haplotypes of *S. andina*, of which two were different from those previously reported (Moncada et al. 2021a) (Fig. 3). The

nucITS rDNA obtained from specimen 22002 represented the same haplotype that was found in Ecuador (Moncada et al. 2021c). In the case of *S. scabrosa* subsp. *scabrosa*, we observed two haplotypes (Fig. 4). The H6 haplotype was distinct from remaining haplotypes, differing from H4 and H7 by only one position. The H4 haplotype was present in three Bolivian specimens and seems to be the most common *S. scabrosa* haplotype, also observed in 47 specimens from the Galapagos Islands (25), Colombia (11), Puerto Rico (7), Mexico (2), Costa Rica (1) and the Dominican Republic (1) (McDonald et al. 2003; Widhelm et al. 2018; Mercado-Díaz et al. 2020; Moncada et al. 2021c), and in Bolivia (3) (Fig. 4).

Initially, due to the presence of apothecia, the specimens presented here as *S. scabrosa* subsp. *scabrosa* were described as *S. aff. scabrosa* on the basis of other morphological features, yet the results of molecular studied allowed their classification as *S. scabrosa* subsp. *scabrosa*. This example shows that, firstly, individual *Sticta* specimens in different regions may be morphologically different. Secondly, phylogenetic analyses are an absolutely essential approach for several groups in this genus.

*Sticta andina* and *S. scabrosa* subsp. *scabrosa* were found in different Departments in Bolivia, Cochabamba and La Paz in Yungas forests, and Chuquisaca and Tarija in Tucumano-Boliviano forests, respectively. According to Moncada et al. (2021a), these species have a wider





**Figure 5.** Morphology of *Sticta andina*. A & C – morphology of upper surface (A – Kukwa 9257; C – Kukwa 15051); B – upper surface with isidia and phyllidia forming in the thallus cracks (arrow) (Kukwa 9257); morphology of lower surface (Kukwa 15051). Scale = 1 mm.

geographical distribution than *S. weigeli*, the species so far considered a cosmopolitan representative of the genus (Ossowska 2021 and literature cited therein). Thus, it can be assumed that also in Bolivia the distributions of *S. andina* and *S. scabrosa* subsp. *scabrosa* are wider than presented here, since the diversity of the genus in this country is not yet fully explored. Unfortunately, the inaccessibility of some regions of Bolivia, e.g., due to the lack of access roads, will make the distribution of many species of the genus not well understood in the near future.

*Sticta andina* B. Moncada, Lücking & Sérus., in Moncada et al., Willdenowia 51(1): 38. 2021. (Fig. 5)

**Description.** Photobiont cyanobacteria. Stipe absent. Thallus irregular to suborbicular, forming rosettes, up to 10 cm wide, moderately branched. Lobes 5–15 mm long and 3–20 mm wide, elongate to flabellate, with rounded apices; margins entire to sinuous, not thickened. Upper surface yellowish brown to dark brown with marginal line in the same color, smooth to rugose or scrobiculate, shiny, without papillae but with irregular, cream maculae. Cilia rare or absent, but tomentum sometimes projects laterally beyond lobes margins and resemble cilia, dark to brown, fasciculate to agglutinated, up to 0.5 mm long. Apothecia abundant to rare, mainly submarginal, dispersed, subpedicellate, disc orange to brownish red, up to 5 mm

in diam., margins dark brown, verrucous to crenate. Vegetative propagules present in all Bolivian specimens (but sometimes can be absent), in the form of isidia and phyllidia, isidia mainly marginal (or present along cracks on the upper surface, Fig. 5C), richly branched, aggregated, palmate to coralloid, with terminal parts dorsiventrally flattened, up to 1 mm long and 0.5 mm broad, phyllidia darker or of the same color as thallus. Medulla white with light yellow patches, K+ yellow. Lower surface uneven to undulate, brown to black; primary tomentum dense to the margin, thick and thinner towards the margin, spongy and fasciculate, dark brown to blackish; secondary tomentum present, arachnoid. Rhizines abundant, developed centrally to submarginally, fasciculate to squarrose, up to 3 mm long, dark brown. Cyphellae dispersed, abundant, 1–20 per cm<sup>2</sup> toward the center and 61–100 per cm<sup>2</sup> toward the margins, rounded, cupuliform to urceolate with wide pore, erumpent to prominent, with erect margins, without tomentum, margin black, basal membrane white, K+ yellow.

Upper cortex paraplectenchymatous, up to 45 µm thick, differentiated into two cell layers; the upper of single cell layer, with cells up to 5 µm diam. Photobiont layer up to 75 µm thick, cells up to c. 15 µm diam. Medulla up to 170 µm thick with hyphae 2.5 µm wide, with yellow-orange crystals. Lower cortex paraplectenchymatous 17–35 µm thick, composed of 2–3 cell layers, cells up



to 15 µm in diam., with a wall 0.6–2.5 µm thick. Hairs of primary tomentum up to 1000 µm long, in fascicles of more to 15, hyphae branched; hairs of secondary tomentum up to 35 µm long, moniliform. Cyphellae cavity up to 300 µm high; without papillae. Apothecia biatorine, up to 500 µm high; epithecium 2.5–5 µm thick, orange-brown. Ascospores 1–3 septate, 27–38 × 9–13 µm (based on own observations and Moncada et al. 2021a).

**Distribution and ecology.** The records of *S. andina* presented here are the first from Bolivia. The species was found on bark of trees in Andean Yungas forests at 1989–3082 m a.s.l. in Cochabamba and La Paz Departments (Fig. 1). Beside Bolivia, the species is known from the Azores, Brazil, Colombia, Costa Rica, Ecuador, Hawaii, Mexico and USA (Moncada et al. 2021a, b). According to Moncada et al. (2021a), *S. andina* is more common than *S. weigelii*.

**Notes.** At first the material belonging at present to *Sticta andina* was divided into three morphologically distinct entities, differing in the type of vegetative propagules and the distribution of apothecia (Moncada 2012; Moncada et al. 2014): *S. andina* s.str. characterized by the absence of propagules and submarginal apothecia, *S. “colombiana”* with phyllidia and laminal apothecia and *S. “paramuna”* lacking vegetative propagules and with marginal apothecia (Moncada 2012; Moncada et al. 2014, 2021a). Despite these differences, the topology of the phylogenetic tree did not validate the recognition of the subclades ‘colombiana’, ‘andina’ and ‘paramuna’ (Moncada et al. 2021a).

*Sticta andina* belongs to the *S. weigelii* morphodeme, but is the only taxon within that group characterised by the presence of often flattened to dorsiventral isidia and phyllidia (but some specimens may lack vegetative propagules; see Moncada et al. 2014, 2021a), which are generally darker than the thallus. Moreover, it differs also in the color of the tomentum and often the presence of abundant apothecia (and then vegetative propagules may be absent) (Moncada et al. 2014, 2021a, b). The type of vegetative propagules is a feature that distinguishes *S. andina* from two isidiate species, *S. isidiokunthii* and *S. weigelii*, recently confirmed from Bolivia (Moncada & Lücking 2012; Ossowska 2021). Both of those species are isidiate, and isidia are branched to coralloid in *S. isidiokunthii* and coralloid to cylindrical in *S. weigelii*. Furthermore, the apothecia are less abundant than in *S. andina*. Moreover, *S. isidiokunthii* has the beige tomentum and the lower surface is beige to brown towards the center, whereas in *S. weigelii* the tomentum is brown to black and the lower surface is beige to reddish brown towards the center (Moncada 2012; Moncada & Lücking 2012; Moncada et al. 2020, 2021a, b; Ossowska 2021). Concerning the phyllidiate *S. scabrosa* subsp. *scabrosa*, this species has narrow, easily detached phyllidia and the tomentum is light to dark grey-brown, while the cilia are golden brown (cilia often absent in *S. andina*, but the tomentum can extend beyond the edge of lobes and may resemble cilia) (Moncada et al. 2020, 2021a).

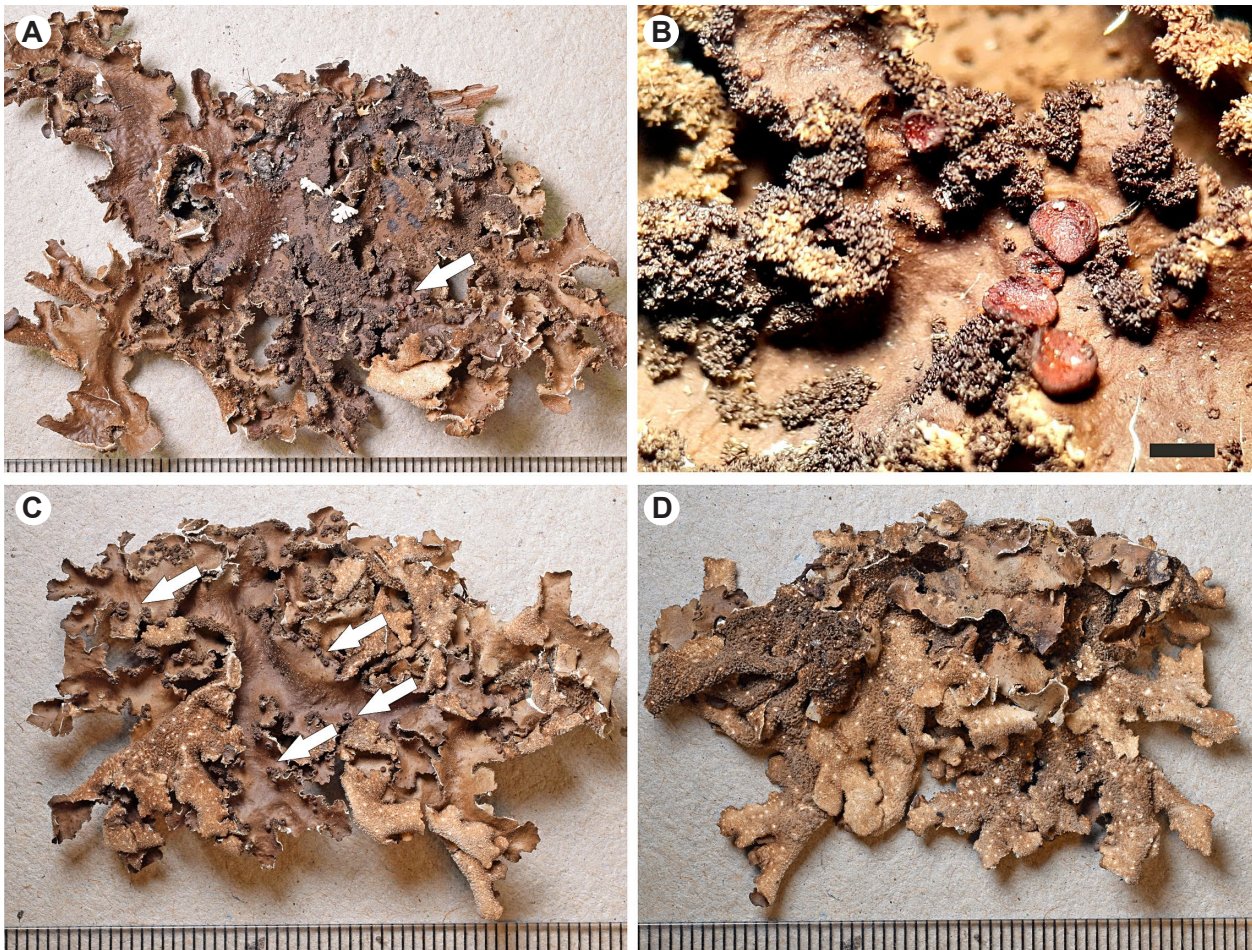
Other species of the *S. weigelii* morphodeme (species with quotation marks – not yet formally described), *S. beauvoisii* (Delise 1825), *S. carolinensis* (McDonald et al. 2003), *S. “hypoglabra”*, *S. “luteocyphellata”* (Moncada 2012), *S. rhizinata*, *S. tunjensis* (Moncada & Lücking 2012), and *S. waikamoi* (Moncada et al. 2021b), produce typical isidia, whereas *S. harrisii* (Mercado-Díaz et al. 2020), *S. fragilinata* (McDonald et al. 2003), *S. “laselvae”*, *S. “lobulata”* (Moncada 2012), *S. phyllidiokunthii* (Moncada et al. 2013c), *S. pseudobauvoisii* (Moncada 2012), *S. scabrosa*, develop phyllidia or lobules (see also Moncada et al. 2013b, 2014, 2021a, b; Widhelm et al. 2018; Ossowska 2021).

**Specimens examined.** BOLIVIA. Dept. Cochabamba, Prov. Carrasco, Parque Nacional Carrasco, between Muruvia and Monte Punku, elev. 3082 m, 17°34'43"S, 65°15'25"W, *Podocarpus* forest, Ceja de Monte Inferior (Altimontano), corticolous, 26 Nov 2014, M. Kukwa 15051 (LPB, UGDA); Dept. La Paz, Prov. Nor Yungas, Parque Nacional y Área Natural de Manejo Integrado Cotapata, near Urpuma colony, elev. 1989 m, 16°13'20"S, 67°52'34"W, Yungas montane forest, corticolous, 30 June 2010, A. Flakus 17210 & P. Rodríguez (KRAM, LPB); Prov. Nor Yungas, near Siniary colony, between Coroico and La Paz, elev. 2190 m, 16°13'20"S, 67°50'37"W, Yungas secondary cloud forest, corticolous, 24 May 2011, M. Kukwa 9257 (LPB, UGDA); Prov. Murillo, Valle del Zongo, elev. 2850 m, 16°08'38"S, 68°06'59"W, Yungas cloud forest, corticolous, 29 May 2011, A. Flakus 22002 & O. Plata (KRAM, LPB).

*Sticta scabrosa* B. Moncada, Merc.-Díaz & Bungartz subsp. *scabrosa*, in Moncada et al., Willdenowia 51(1): 41. 2021. (Fig. 6)

**Description.** Photobiont cyanobacteria. Stipe absent. Thallus suborbicular to irregular, up to 15 cm in diam., strongly branched. Lobes 5–10 mm long and 4–10 mm broad, ligulate to flabellate, imbricate, undulate, with rounded tips, margins entire to crenate, not thickened. Upper surface uneven to scrobiculate, yellow brown, with lobe margins in the same color; maculae cream. Medulla white to light cream; K+ ochraceous. Cilia scarce to absent, up to 0.5 mm long, pale to golden brown, fasciculate. Apothecia scarce, marginal to submarginal or laminal, dispersed to aggregated, subpedicellate to pedicelled, without pronounced invagination on lower side, up to 2 mm diam.; disc orange brown to chocolate brown (mature), matt to shiny; margin entire to very rarely shallowly crenate, with very short and very rarely hyaline hairs on some apothecia, margin at the same color as thallus, light to dark brown. Phyllidia marginal and some also laminal, branched and coralloid, aggregate, 0.5 mm long and 0.3 mm broad, of the same colour as thallus or darker. Lower surface undulate, brown yellow to brownish yellow; primary tomentum dense, but sparse towards the margins, thin or thick, spongy to arachnoid, pale grey to darker grey in the centrum; secondary tomentum present, appressed, arachnoid, pale. Rhizines sparse, irregularly dispersed, fasciculate, grey brown. Cyphellae abundant, 25–40 per cm<sup>2</sup> towards center of thallus and 45–60 per cm<sup>2</sup> towards the margins, dispersed, rounded to irregular, urceolate with wide pore, prominent, below the level of tomentum, with the margin raised and involute, cream





**Figure 6.** Morphology of *Sticta scabrosa*. A & C – morphology of upper surface; arrows point to apothecia (A – Kukwa 11229; C – Flakus 19712); B – close up of apothecia (Kukwa 11229); D – morphology of lower surface (Flakus 19712). Scale = 1 mm.

yellow to light brown, with tomentum; pore 0.3–1.4 mm in diam; basal membrane yellow to cream, K+ ochraceous.

Upper cortex paraplectenchymatous, up to 30  $\mu\text{m}$  thick, homogenous, cells diam. up to 11  $\mu\text{m}$  and their wall up to 2  $\mu\text{m}$  thick. Photobiont layer up to 70  $\mu\text{m}$  thick, cells diam. up to 15  $\mu\text{m}$ . Medulla up to 160  $\mu\text{m}$  thick with hyphae 2.5  $\mu\text{m}$  wide, without crystals. Lower cortex paraplectenchymatous, up to 30  $\mu\text{m}$  thick, cells diam. up to 12  $\mu\text{m}$  with a wall up to 2.5  $\mu\text{m}$  thick. Hairs of primary tomentum up to 1000  $\mu\text{m}$  long, composed of fascicles of 6–12 agglutinate hyphae; hairs of secondary tomentum up to 25  $\mu\text{m}$  long, moniliform. Cyphellae cavity up to 200  $\mu\text{m}$  high; without papillae. Apothecia biatorine, up to 400  $\mu\text{m}$  high, without distinct stipe; excipulum up to 100  $\mu\text{m}$  broad. Hymenium up to 75  $\mu\text{m}$  high; epihymenium up to 12  $\mu\text{m}$  high, orange brown, K–, with gelatinous upper layer. Ascospores (0–)1–3-septate, usually constricted in middle septa, but sometimes constricted in all septa, 23–27.5  $\times$  5–6  $\mu\text{m}$  (based on own observations and Moncada et al. 2021a).

**Distribution and ecology.** *Sticta scabrosa* subsp. *scabrosa* is new for Bolivia and it is reported from Tarija and Chuquisaca Departments (Fig. 1). It was found growing on the bark of trees in Tucumano-Boliviano forests at an altitude 1040–1400 m a.s.l. Previously, it has been reported from Argentina, Brazil, Colombia, Costa Rica,

Dominican Republic, Ecuador, Mexico, and Puerto Rico. *Sticta scabrosa* subsp. *hawaiiensis* is known only from Hawaii (Moncada 2012; Mercado-Díaz et al. 2020; Moncada et al. 2021a, b).

**Notes.** Two specimens of *S. scabrosa* subsp. *scabrosa* from Bolivia (11229, 19712) have scarce, marginal to laminal apothecia (Fig. 6). So far, fertile material has not been known in this species (see Moncada 2012; Moncada et al. 2021a, b) and here we presented the first description of apothecia.

Within *S. scabrosa* Moncada et al. (2021a, b), two subspecies were distinguished differing in two positions in the nucITS rDNA, *S. scabrosa* subsp. *hawaiiensis* (Moncada et al. 2020) and *S. scabrosa* subsp. *scabrosa*. All specimens from Bolivia represent *S. scabrosa* subsp. *scabrosa* (Fig. 2).

*Sticta scabrosa*, like *S. andina*, belongs to the *S. weigeli* morphodeme (Moncada et al. 2021a) and produces phyllidia. It differs from other phyllidiate taxa, such as *S. harrisii*, *S. “pseudobeauvoisii”* or *S. fragilinata* in the color of the tomentum, which is at least partly brown (Moncada 2012; Moncada et al. 2021a; Ossowska 2021). Moreover, the lobe margins in *S. harrisii* are covered by abundant, white true cilia (Moncada 2012; Mercado-Díaz et al. 2020). On the other hand, *S. scabrosa* differs from other taxa to the *S. weigeli* morphodeme with grey



to mentum, such as *S. “hypoglabra”* or *S. “luteocyphelata”* in type and morphology of vegetative propagules as those species produce cylindrical to coralloid, sometimes flattened isidia (Moncada 2012; Ossowska 2021). A table comparing all species was presented by Ossowska (2021).

**Specimens examined.** BOLIVIA. Dept. Chuquisaca, Prov. Luis Calvo, Parque Nacional y Área Natural de Manejo Integrado Serranía de Ñaño, close to Ticucha, elev. 1040 m, 19°37'26"S, 63°50'50"W, disturbed Sub-Andean Tucumano-Boliviano forest with *Acacia*, corticolous, 18 July 2015, M. Kukwa 16336 (LPB, UGDA); Dept. Tarija, Prov. Burnet O'Connor, RN de Flora y Fauna Tariquía near Salinas, elev. 1400 m, 21°49'15"S, 64°12'44"W, Tucumano-Boliviano montano forest, 10 Aug 2012, M. Kukwa 11229 (LPB, UGDA); Prov. Aniceto Arce, RN de Flora y Fauna Tariquía Le Hierba, elev. 1070 m, 22°08'46"S, 64°31'36"W, Tucumano-Boliviano submontane forest, near river, 25 Nov 2010, A. Flakus 19712 & J. Quisbert (KRAM, LPB); Prov. Aniceto Arce, Filo de Sidras, elev. 1064 m, 22°14'50"S, 64°33'28"W, Tucumano-Boliviano submontane forest, 22 Nov 2010, A. Flakus 18470 (KRAM, LPB).

## Acknowledgements

We are grateful to Adam Flakus and Pamela Rodríguez-Flakus for making the specimens available for this study, and Robert Lücking and Bibiana Moncada for photographs of the specimens used for the preparation of plates. We would like also to thank the members of Herbario Nacional de Bolivia, Instituto de Ecología, the Universidad Mayor de San Andrés, La Paz, for their generous cooperation. The research was supported by the Synthesys+ program (DE-TAF-8180) and University of Gdańsk, granted to EO. Lichen samples were collected in Bolivia with the permission of Ministerio de Media Ambiente y Agua and in cooperation with Herbario Nacional de Bolivia (LPB), who in turn made specimens available to the herbarium of University of Gdańsk and W. Szafer Institute of Botany, Polish Academy of Sciences in Kraków.

## Supplementary electronic materials

**Table S1.** Sequences of nucITS rDNA of references downloaded from GenBank for phylogenetic inference. [Download file](#)

**Table S2.** Sequences of nucITS rDNA of references downloaded from GenBank and used in this study in haplotype networks. Newly sequenced records from Bolivia are marked in bold. [Download file](#)

## References

Acharius, E. 1810. *Lichenographia Universalis*. Gottingae, Dankwerts.

Altschul, S. F., Madden, T. L., Schäffer, A. A., Zhang, J., Zhang, Z., Miller, W. & Lipman, J. 1997. Gapped BLAST and PSI-BLAST: a new generation of protein database search programs. *Nucleic Acids Research* 25: 3389–3402. <https://doi.org/10.1093/nar/25.17.3389>

Cannon, P. F. & Kirk, P. M. 2007. *Fungal Families of the World*. Wallingford, CAB International.

Chernomor, O., von Haeseler, A. & Minh, B. Q. 2016. Terrace aware data structure for phylogenomic inference from supermatrices. *Systematic Biology* 65: 997–1008. <https://doi.org/10.1093/sysbio/syw037>

Clement, M., Snell, Q., Walker, P., Posada, D. & Crandall, K. 2002. TCS: Estimating gene genealogies. In: Parallel and Distributed Processing Symposium, International Proceedings 2: 184.

Delise, D. 1825. *Histoire de Lichens. Genre Sticta*. Caen.

Galloway, D. J. 1994. Studies on the lichen genus *Sticta* (Schreber) Ach.: I. Southern South American species. *Lichenologist* 26: 223–282. <https://doi.org/10.1006/lich.1994.1019>

Galloway, D. J. 2007. *Flora of New Zealand Lichens. Revised Second Edition Including Lichen-Forming and Lichenicolous Fungi*. Volume 2. Manaaki Whenua Press, Lincoln.

Gardes, M. & Bruns, T. D. 1993. ITS primers with enhanced specificity for basidiomycetes-application to the identification of mycorrhizae and rust. *Molecular Ecology* 2: 113–118. <https://doi.org/10.1111/j.1365-294X.1993.tb00005.x>

Herzog, T. 1922. Beitrag zur Flechtenflora von Bolivia. *Hedwigia* 63: 263–268.

Herzog, T. 1923. Die Pflanzenwelt der bolivianischen Anden und ihres östlichen Vorlandes. In: Engler, A. & Drude, O. (eds) *Die Vegetation der Erde*, volume XV, pp. 1–258. Leipzig.

Huelsenbeck, J. P. & Ronquist, F. 2001. MRBAYES: Bayesian inference of phylogenetic trees. *Bioinformatics* 17: 754–755. <https://doi.org/10.1093/bioinformatics/17.8.754>

Katoh, K., Misawa, K., Kuma, K. & Miyata, T. 2002. MAFFT: A novel method for rapid multiple sequence alignment based on fast Fourier transform. *Nucleic Acids Research* 30: 3059–3066. <https://doi.org/10.1093/nar/gkf436>

Kirk, P. M., Cannon, P. F., Minter, D. W. & Stalpers, J. A. 2008. *Dictionary of the Fungi*. 10th edn. Wallingford, CAB International.

Leigh, J. W. & Bryant, D. 2015. PopART: Full-feature software for haplotype network construction. *Methods in Ecology and Evolution* 6(9): 1110–1116. <https://doi.org/10.1111/2041-210X.12410>

Lücking, R., Moncada, B., Soto-Medina, E., Simijaca, D. & Sipman, H. J. M. 2021a. Actualización nomenclatural y taxonómica del Catálogo de Líquenes de Colombia. *Revista de la Academia Colombiana de Ciencias Exactas Físicas y Naturales* 18: 1–43. <https://doi.org/10.18257/raccefyfyn.1266>

Lücking, R., Leavitt, S. D. & Hawksworth, D. L. 2021b. Species in lichen-forming fungi: balancing between conceptual and practical considerations, and between phenotype and phylogenomics. *Fungal Diversity* 109: 99–154. <https://doi.org/10.1007/s13225-021-00477-7>

McDonald, T., Miądlikowska, J. & Lutzoni, F. 2003. The lichen genus *Sticta* in the Great Smoky Mountains: A phylogenetic study of morphological, chemical, and molecular data. *The Bryologist* 106(1): 61–79. [https://doi.org/10.1639/0007-2745\(2003\)106\[0061:TLGSIT\]2.0.CO;2](https://doi.org/10.1639/0007-2745(2003)106[0061:TLGSIT]2.0.CO;2)

Mercado-Díaz, J. A., Lücking, R., Moncada, B., Widhelm, T. J. & Lumbsch, H. T. 2020. Elucidating species richness in lichen fungi: The genus *Sticta* (Ascomycota: Peltigeraceae) in Puerto Rico. *Taxon* 69(5): 851–891. <https://doi.org/10.1002/tax.12320>

Miller, M. A., Pfeiffer, W. & Schwartz, T. 2010. Creating the CIPRES Science Gateway for inference of large phylogenetic trees. In: Proceedings of the Gateway Computing Environments Workshop (GCE), 14 November 2010, New Orleans, Louisiana, 1–8 pp.

Moncada, B. 2012. El género *Sticta* (Schreb.) Ach. en Colombia, Taxonomía, Ecogeografía e Importancia. Bogotá: PhD thesis, Universidad Nacional de Colombia.

Moncada, B. & Lücking, R. 2012. Ten new species of *Sticta* and counting: Colombia as a hot spot for unrecognized diversification in a conspicuous macrolichen genus. *Phytotaxa* 74: 1–29. <https://doi.org/10.11646/phytotaxa.74.1.1>

Moncada B., Lücking, R. & Betancourt-Macuase, L. 2013a. Phylogeny of the *Lobariaceae* (lichenized Ascomycota: Peltigerales), with a reappraisal of the genus *Lobariella*. *Lichenologist* 45(2): 203–263. <https://doi.org/10.1017/S0024282912000825>

Moncada, B., Lücking, R. & Coca, L. F. 2013b. Six new apotheciate species of *Sticta* (lichenized Ascomycota: Lobariaceae) from the Colombian Andes. *Lichenologist* 45(5): 635–656. <https://doi.org/10.1017/S0024282913000376>

Moncada, B., Coca, L. F. & Lücking, R. 2013c. Neotropical members of *Sticta* (lichenized Ascomycota: Lobariaceae) forming

- photosymbiodemes, with the description of seven new species. *The Bryologist* 116: 169–200. <https://doi.org/10.1639/0007-2745-116.2.169>
- Moncada, B., Lücking, R. & Suárez, A. 2014. Molecular phylogeny of the genus *Sticta* (lichenized *Ascomycota: Lobariaceae*) in Colombia. *Fungal Diversity* 64: 205–231. <https://doi.org/10.1007/s13225-013-0230-0>
- Moncada, B., Lücking, R. & Lumbsch, H. T. 2020. Rewriting the evolutionary history of the lichen genus *Sticta* (*Ascomycota: Peltigeraceae* subfam. *Lobarioideae*) in the Hawaiian islands. *Plant and Fungal Systematics* 65(1): 95–119. <https://doi.org/10.35535/pfsyst-2020-0005>
- Moncada, B., Mercado-Díaz, J. A., Smith, C. W., Bungartz, F., Sérusiaux, E., Lumbsch, H. T. & Lücking, R. 2021a. Two new common, previously unrecognized species in the *Sticta weigelii* morphodeme (*Ascomycota: Peltigeraceae*). *Willdenowia* 51: 35–45. <https://doi.org/10.3372/wi.51.51103>
- Moncada, B., Smith, C. W. & Lücking, R. 2021b. A taxonomic reassessment of the genus *Sticta* (lichenized *Ascomycota: Peltigeraceae*) in the Hawaiian archipelago. *Lichenologist* 53: 117–133. <https://doi.org/10.1017/S0024282920000353>
- Moncada, B., Mercado-Díaz, J. A., Magain, N., Hodkinson, B. P., Smith, C. W., Bungartz, F., Pérez-Pérez, R.-E., Gumboski, E., Sérusiaux, E., Lumbsch, H. T. & Lücking, R. 2021c. Phylogenetic diversity of two geographically overlapping lichens: isolation by distance, environment, or fragmentation? *Journal of Biogeography* 48: 676–689. <https://doi.org/10.1111/jbi.14033>
- Nguyen, L. T., Schmidt, H. A., von Haeseler, A. & Minh, B. Q. 2015. IQ-TREE: a fast and effective stochastic algorithm for estimating maximum likelihood phylogenies. *Molecular Biology and Evolution* 32: 268–274. <https://doi.org/10.1093/molbev/msu300>
- Nylander, J. A. A. 2004. *MrModeltest 2.0. Program distributed by the author*. Uppsala: Evolutionary Biology Centre, Uppsala University.
- Nylander, W. 1859. Lichenes in regionibus exoticis quibusdam vigentes expositis synoptice enumerationibus. *Annales des Sciences Naturelles, la botanique* 11: 205–264.
- Nylander, W. 1861. Additamentum ad lichenographiam Andium Bolivienisium. *Annales des Sciences Naturelles, la botanique* 15: 365–382.
- Okonechnikov, K., Golosova, O. & Fursov, M. 2012. UGENE team. Unipro GENE: A unified bioinformatics toolkit. *Bioinformatics* 28: 1166–1167. <https://doi.org/10.1093/bioinformatics/bts091>
- Orange, A., James, P. W. & White, F. J. 2001. *Microchemical methods for the identification of lichens*. British Lichen Society, London.
- Ossowska, E. A. 2021. First records of *Sticta weigelii* s.str. from Bolivia confirmed by molecular data. *Folia Cryptogamica Estonica* 58: 65–72. <https://doi.org/10.12697/fce.2021.58.09>
- Ossowska, E. A., Moncada, B., Kukwa, M., Flakus, A., Rodriguez-Flakus, P., Olszewska, S. & Lücking, R. 2022. New species of *Sticta* (lichenized *Ascomycota*, lobarioid *Peltigeraceae*) from Bolivia suggest a high level of endemism in the Central Andes. *MycoKeys* 92: 131–160. <https://doi.org/10.3897/mycokeys.92.89960>
- Rambaut, A. 2006–2014. FigTree v.1.4.2. Available Online at: <http://tree.bio.ed.ac.uk/software/figtree/> (accessed April 12, 2021)
- Rodriguez-Flakus, P., Kukwa, M., Etayo, J., Lücking, R., Meneses, R. I., Rivas Plata, E., Stanton, D., Truong, C., Vargas, R. & Flakus, A. 2016. Preliminary catalogue of lichens and lichenicolous fungi from Bolivia. <http://bio.botany.pl/lichens-bolivia/en,stroma,catalogue,5.html> (Version 1.5. 31 December 2016).
- Rusby, H. H. 1896. An enumeration of the plant collected in Bolivia by Miguel Bang, with description of new genera and species. Part III. *Memories of the Torrey Botanical Club* 6(1): 1–130.
- Schoch, C. L., Seifert, K. A., Huhndorf, S., Robert, V., Spouge, J. L., Levesque, C. A., Chen, W. & Fungal Barcoding Consortium. 2012. Nuclear ribosomal internal transcribed spacer (ITS) region as a universal DNA barcode marker for Fungi. *Proceedings of the National Academy of Sciences of the United States of America* 109: 6241–6246. <https://doi.org/10.1073/pnas.1117018109>
- White, T. J., Bruns, T., Lee, S. & Taylor, J. 1990. Amplification and direct sequencing of fungal ribosomal RNA genes for phylogenetics. In: Innis, M. A., Gelfand, D. H., Sninsky, J. J. & White, T. J. (eds) *PCR Protocols: a Guide to Methods and Applications*, pp. 315–322. Academic Press, San Diego.
- Widhelm, T. J., Bertoletti, F. R., Asztalos, M. J., Mercado-Díaz, J. A., Huang, J.-P., Moncada, B., Lücking, R., Magain, N., Sérusiaux, E., Goffinet, B., Crouch, N., Mason-Gamer, R. & Lumbsch, H. T. 2018. Oligocene origin and drivers of diversification in the genus *Sticta* (*Lobariaceae*, *Ascomycota*). *Molecular Phylogenetics and Evolution* 126: 58–73. <https://doi.org/10.1016/j.ympev.2018.04.006>