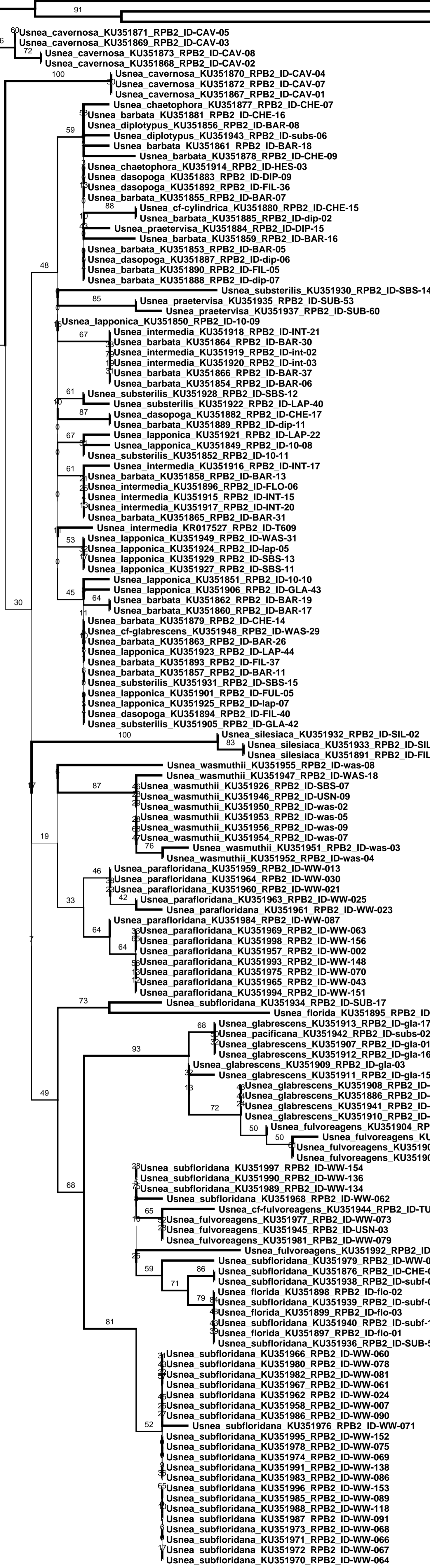


Usnea_sphaecelata_DQ883710_RPB2_ID-AFTOL-ID-816
Usnea_antarctica_DQ883709_RPB2_ID-AFTOL-ID-813

Usnea_cornuta_AY485635_RPB2_ID-unknown
Usnea_ceratina_KU351874_RPB2_ID-CER-02
Usnea_ceratina_KU351875_RPB2_ID-CER-05

100

98



0.006